



∧ coloreless # 1



∧ spruce # 21



∧ straw yellow # 25



∧ pine # 18



∧ larch# 24



∧ cherry # 22



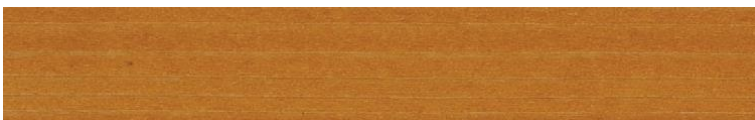
∧ oak # 2



∧ old oak # 23



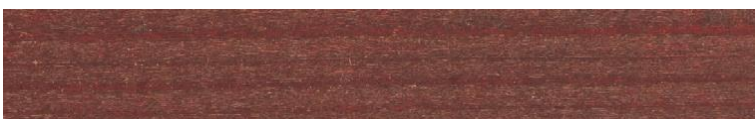
∧ hazel # 19



∧ dark larch # 9



∧ teak # 3



∧ mahogany # 7



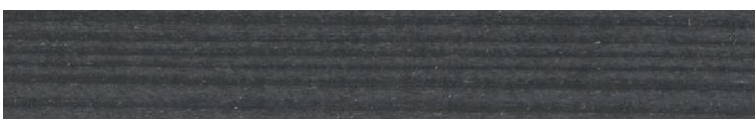
∧ walnut # 4



∧ rosewood # 11



∧ black # 5



∧ anthracite # 20



∧ gray # 12



∧ white # 8



∧ yellow # 15



∧ green # 16



∧ coloreless # 1



∧ spruce # 21



∧ straw yellow # 25



∧ pine # 18



∧ larch # 24



∧ cherry # 22



∧ oak # 2



∧ old oak # 23



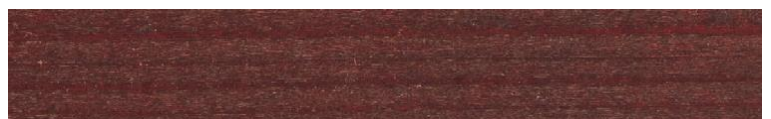
∧ hazel # 19



∧ dark larch # 9



∧ teak# 3



∧ mahogany # 7



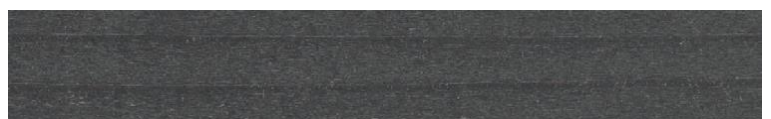
∧ walnut# 4



∧ rosewood # 11



∧ black # 5



∧ anthracite # 20



∧ gray # 12



∧ white # 8



∧ yellow# 15



∧ green # 16

The shown shades are only informative. Silvanol stain B is a transparent - semi-transparent coating; therefore, the color of the appearance of your product is influenced by the color of the substrate or the wood you are treating, as well as the degree of surface treatment of the product. The final appearance also depends on the number of coatings. The prescribed minimum coating is 200 to 250 g/m², which is usually achieved by two to three coatings. We recommend that you check the color shade before using it on a piece of wood of the same type and treatment as will be fitted in your product or in your facility. All color shades of Silvanol stain B coating, which are not included in the new color chart (Nos. 6, 10, 13, 14, 17) can be ordered at the company Silvaprodukt, d.o.o. When ordering quantities above 10 kg, we will be happy to prepare the desired shade.